



RECP #: 752736

RECORDED 5/8/2019 AT 1:14 PM BK# 2620 PG# 1778
Debra K. Lee, CLERK OF LARAMIE COUNTY, WY PAGE 1 OF 1

STATE OF WYOMING CORNER RECORD

(In compliance with the CORNER PERPETUATION AND FILING ACT, Wyoming Statutes, 1997 Section 33-29-140, et. seq., and the Rules and Regulations of the Board of Registrations for Professional Engineers and Professional Land Surveyors)

SOUTHEAST CORNER SECTION 29, T. 18 N., R. 62 W., 6TH P.M., LARAMIE COUNTY, WYOMING

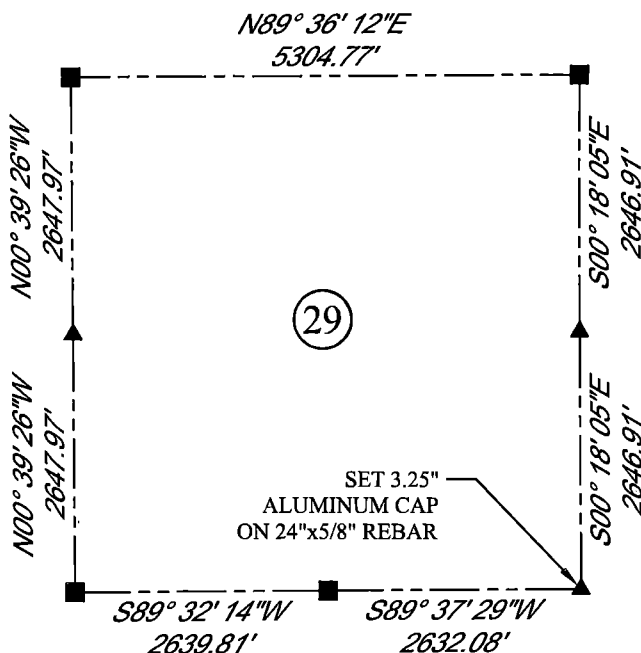
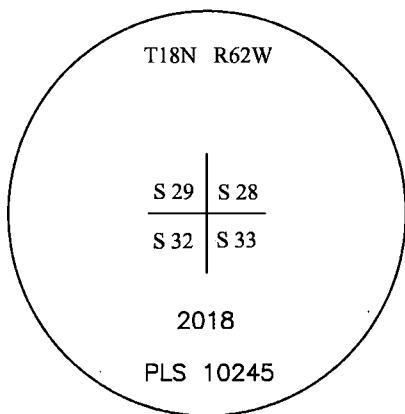
GLO: SET SANDSTONE 24x16x4, 12 ins. DEEP, MARKED WITH ONE NOTCH ON SOUTH SIDE AND FOUR NOTCHES ON EAST SIDE FOR CORNER TO SECTIONS 28, 29, 32 AND 33
FOUND: NOTHING. SET 3.25" ALUMINUM CAP AT PROPORTIONATE (DOUBLE) DISTANCE, MARKED AS SHOWN



SCALE: NONE

NORTH DETERMINED BY
G.P.S OBSERVATIONS

SET 3.25" ALUMINUM CAP, STAMPED AS SHOWN
RAISED MOUND OF SANDSTONES ON NORTH SIDE
AND SET FIBERGLASS ROD



LEGEND:

- FOUND BLM CAP
- FOUND USFS CAP
- FOUND STONE
- FOUND PRIVATE MONUMENT
- ◆ CALCULATED POSITION
- ▲ SET MONUMENT (LS10245)
- SECTION LINE

DATE OF FIELD WORK: 10/04/2018 OFFICE REFERENCE: MERIDEN

CROSS INDEX DIAGRAM

	1	2	3	4	5	6	7	8	9	10	11	12	13	14	15	16	17	18	19	20	21	22	23	24	25		
A																											B
B																											C
C			6																								D
D					5																						E
E						4																					F
F																											G
G			7																								H
H					8																						I
I						9																					J
J																											K
K																											L
L			18																								M
M					17																						N
N						16																					O
O																											P
P			19																								Q
Q					20																						R
R						21																					S
S																											T
T			30																								U
U					29																						V
V						28																					W
W																											X
X			31																								Y
Y					32																						Z
Z						33																					
	1	2	3	4	5	6	7	8	9	10	11	12	13	14	15	16	17	18	19	20	21	22	23	24	25		

WOOD
2615 AVIATION DRIVE
SHERIDAN, WY 82801
PH: 307-675-6400

THIS CORNER RECORD WAS
PREPARED BY ME OR UNDER
MY DIRECTION AND
SUPERVISION,
SEAL AND SIGNATURE

wood.

